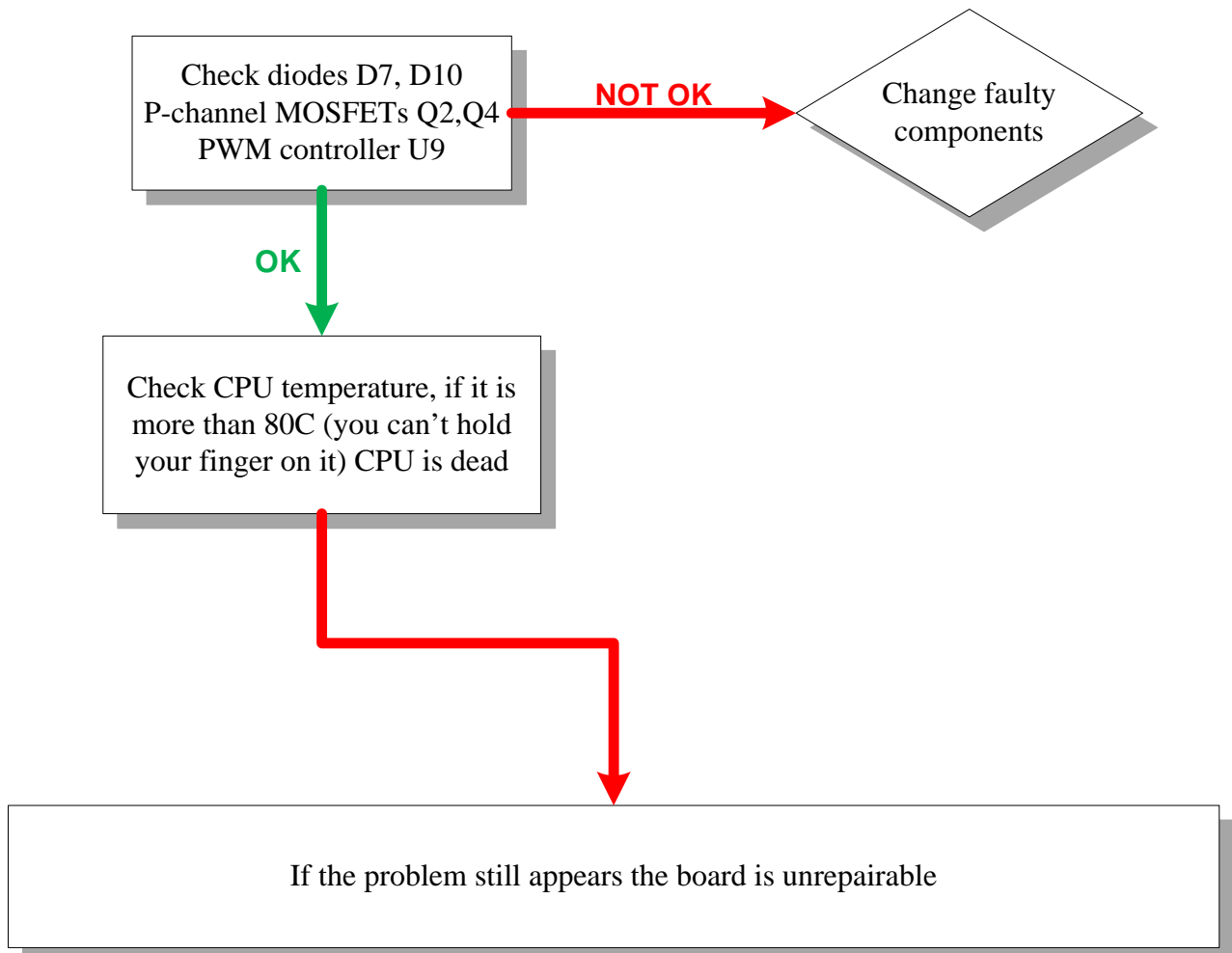


RB150(Minirouter) Trouble shooting

These repair instructions are for **NON WARRANTY** repairs only!

Please make visual inspection for signs of corrosion or mechanical damages before starting.

No power, blue LED doesn't shine.

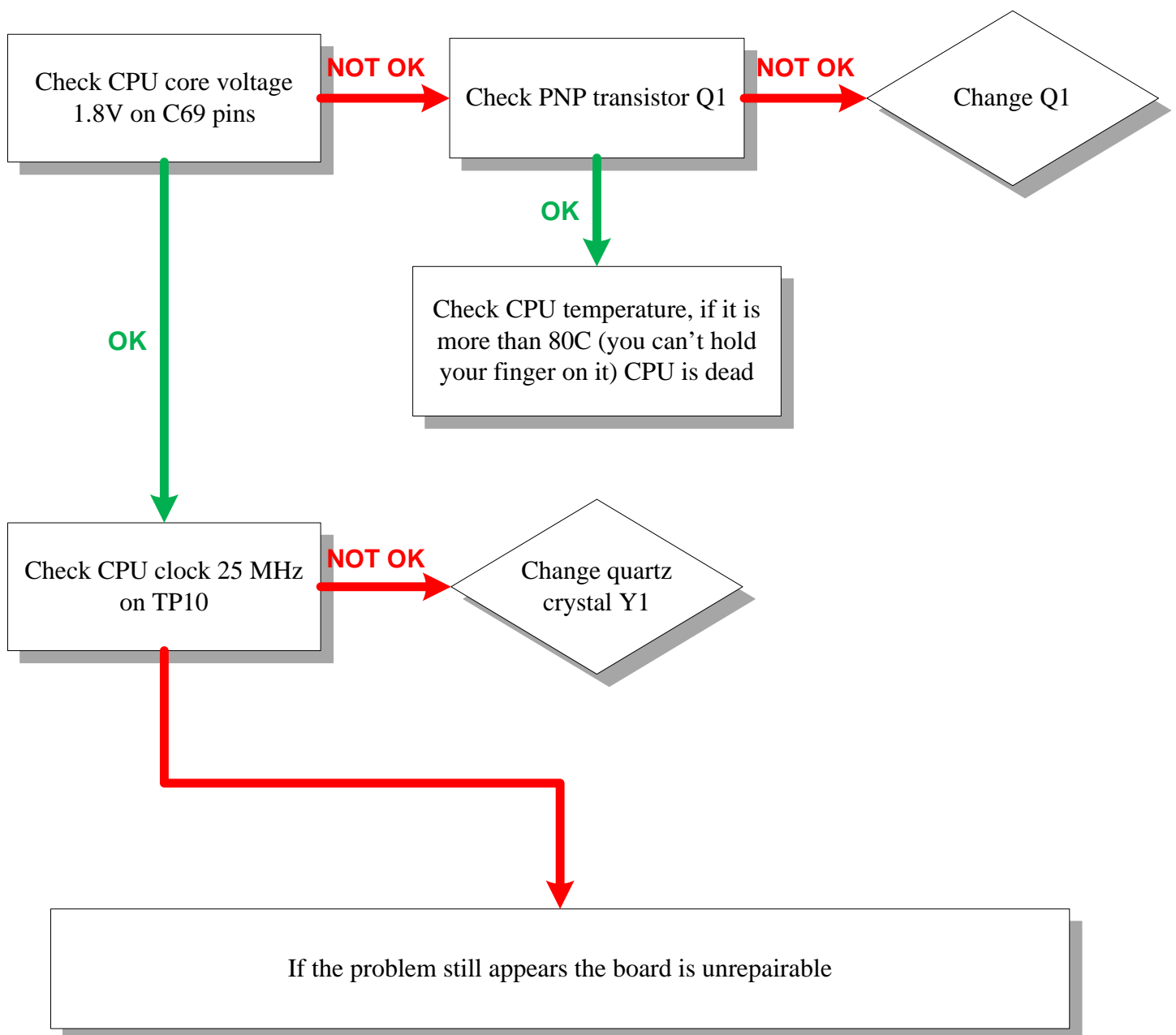


RB150(Minirouter) Trouble shooting

These repair instructions are for **NON WARRANTY** repairs only!

Please make visual inspection for signs of corrosion or mechanical damages before starting.
Also try to reset BIOS with S1 button and re-install Router OS with Netinstall.

Doesn't boot, blue LED is ON.

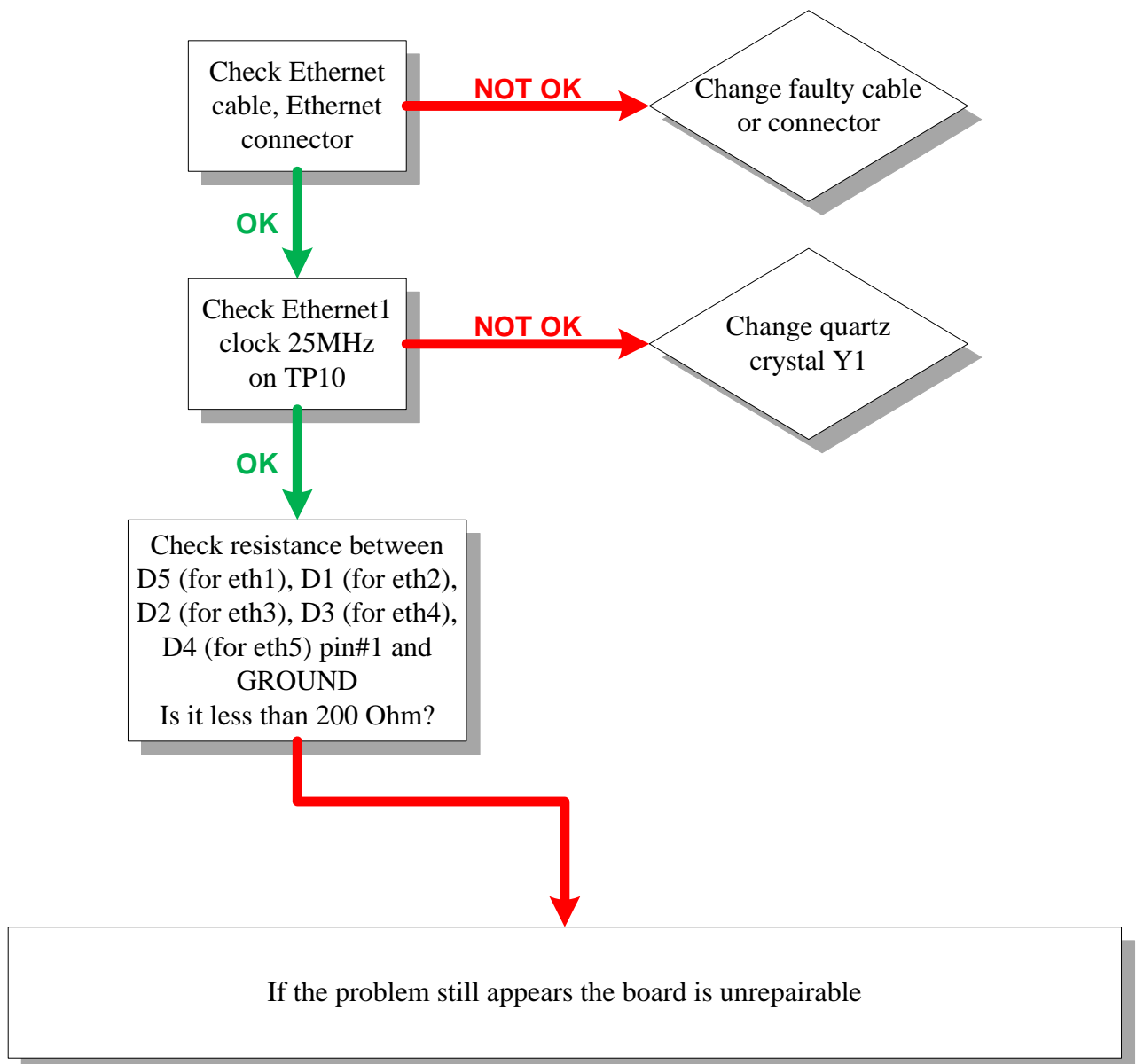


RB150(Minirouter) Trouble shooting

These repair instructions are for **NON WARRANTY** repairs only!

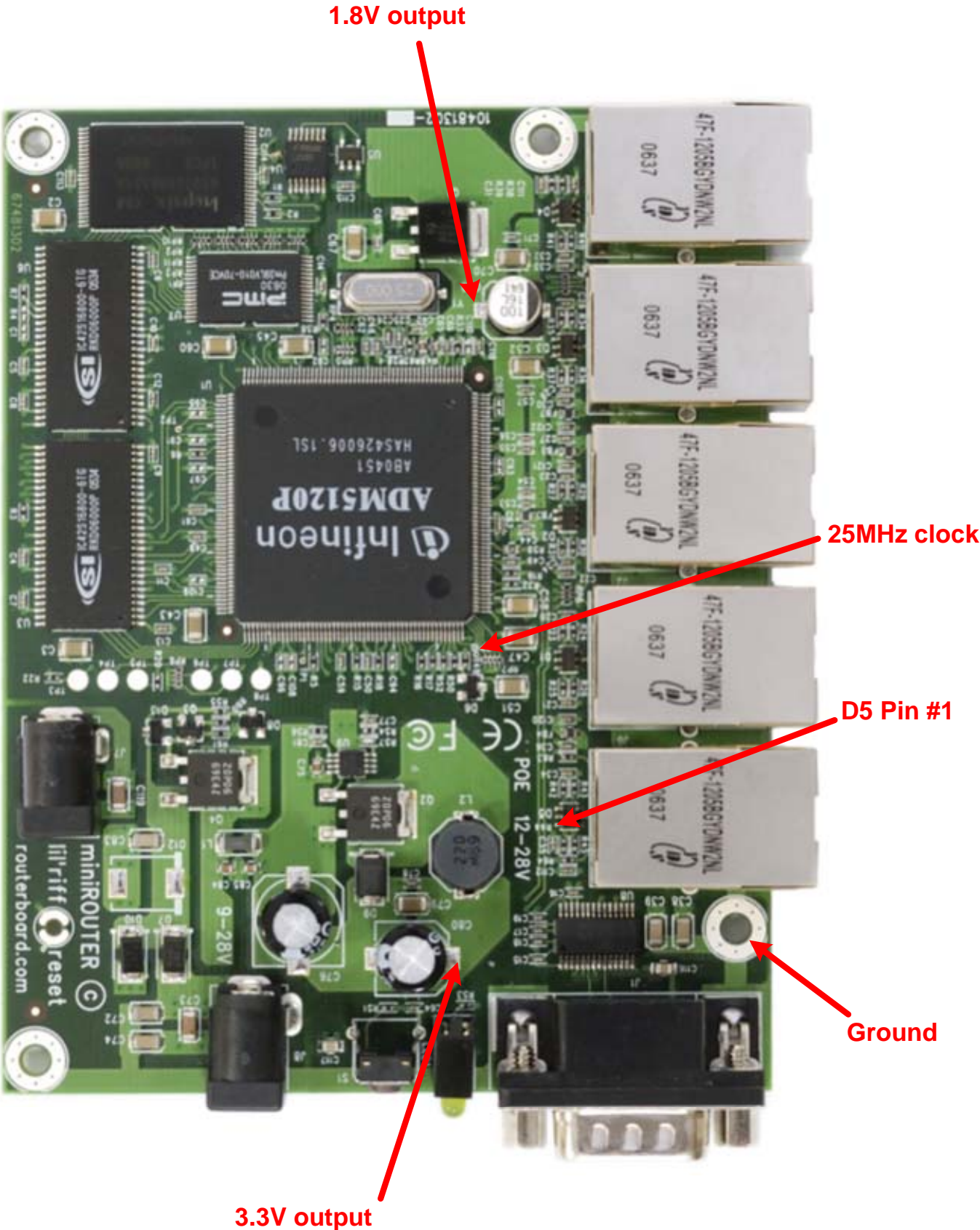
Please make visual inspection for signs of corrosion or mechanical damages before starting.

Ethernet doesn't work, drops ping packets.



Reference number	Part number	Manufacturer	Description
D7, D10	STPS2L60A	ST	Schottky Diode 60V, 2A, SMA
Q1	2SB1412TLR	ROHM	PNP Transistor 20V, 5A, DPAK
Q2, Q4	NTD2955T4G	ON Semi	P-channel MOSFET -60V, -12A, DPAK
U9	LM3485MMX	National	PWM Controller, MSOP8
Y1	TGSCSM2-25M0A50	TGS Crystals	SMD Quartz Crystal 25MHz

RB150 Reference picture



1.8V output

25MHz clock

D5 Pin #1

Ground

3.3V output